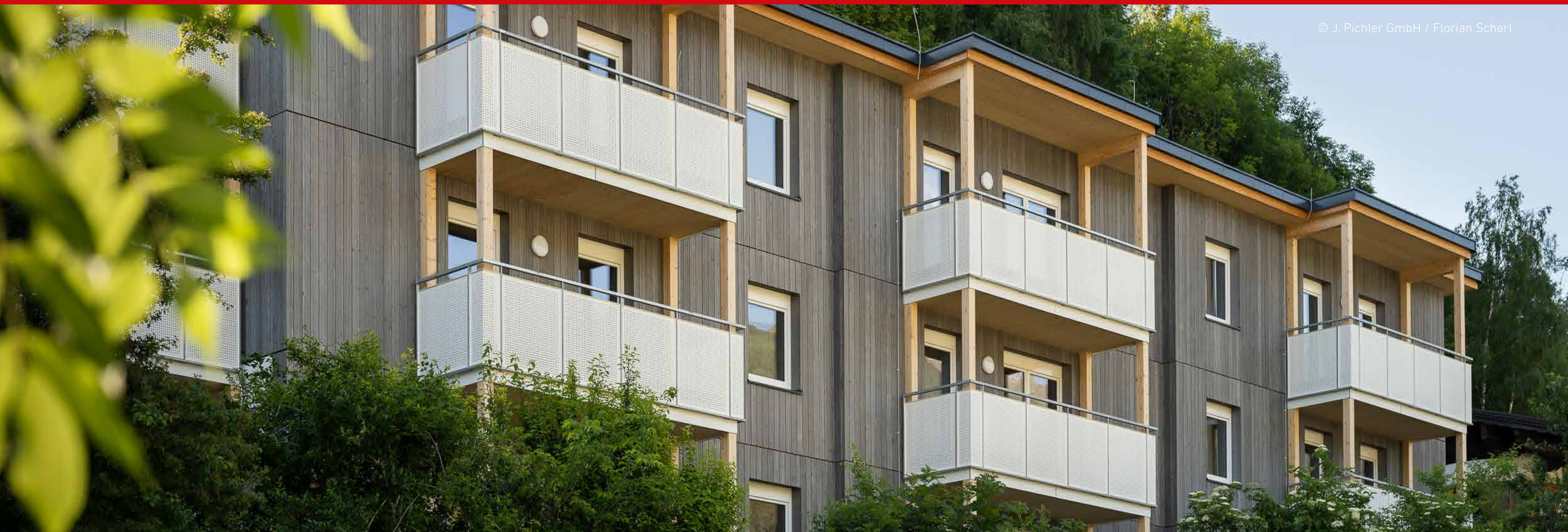


OBJECT OF THE MONTH

© J. Pichler GmbH / Florian Scherl



RESIDENTIAL BUILDING, MATREI

In Matrei am Brenner, a multi-party house with 9 apartments on 3 levels was built in passive house quality in 2022. The exceptional hillside location of the property and the wooden construction make the residential complex a very special property.

STATE-OF-THE-ART AND ENVIRONMENTALLY FRIENDLY STANDARDS

The timber-frame residential building meets the highest criteria in terms of energy efficiency and climate-friendly construction. It meets the passive house standards according to housing subsidies and is klimaaktiv Gold certified. The residents can look forward to climate-active apartments with low energy expenditure and a particularly high quality of living thanks to the comfort ventilation system in combination with an air heat pump.

A tailor-made system solution was delivered with the central compact ventilation unit LG 1400, including components for passive house or low-energy construction.

DATA & FACTS

Location: Tirol

Completion: 2022

Type of building: Passive house residential building

Builder: Alpenländische Gemeinnützige WohnbauGmbH

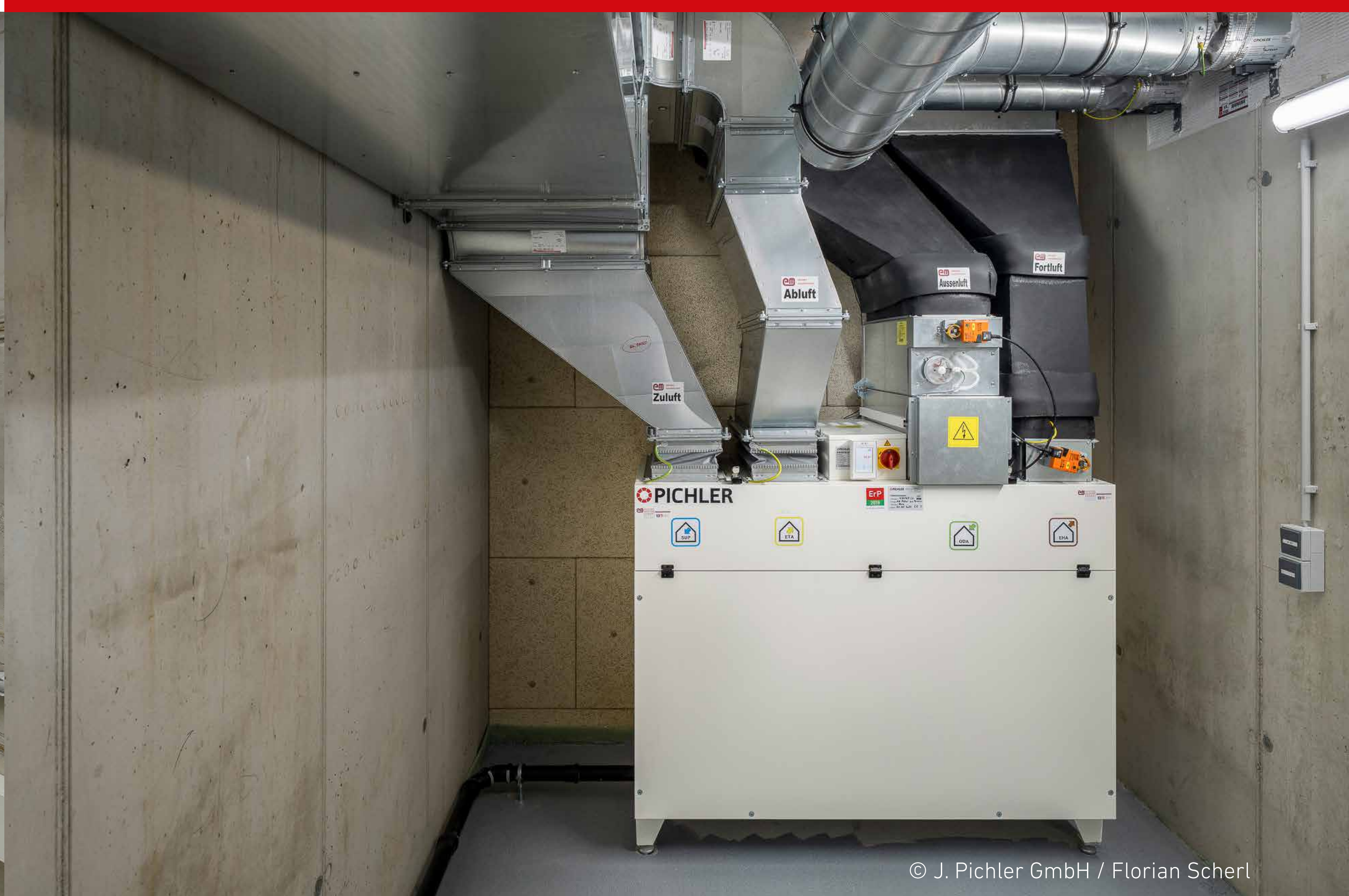
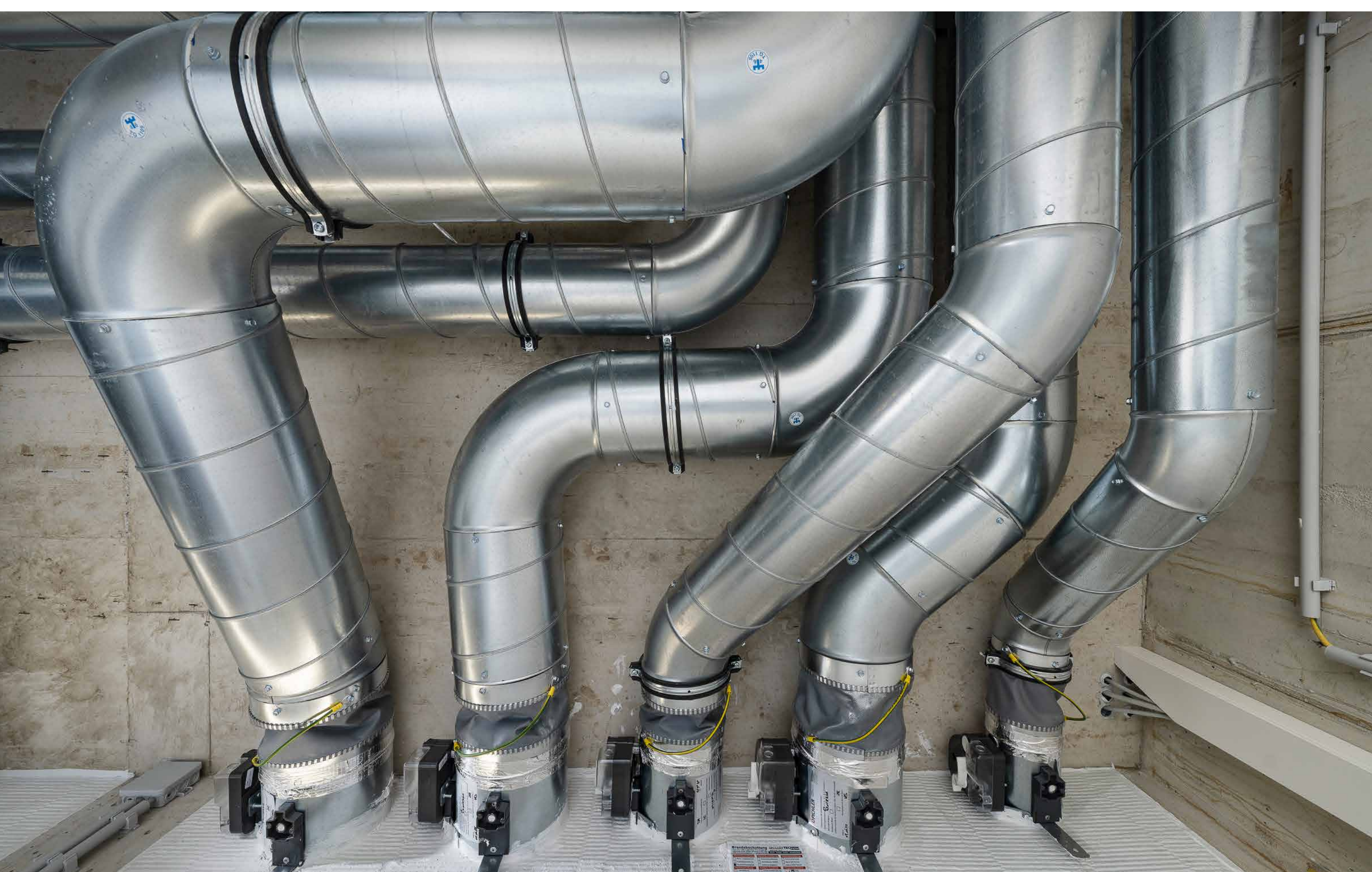
Architect: Arch. DI Siegfried Hybner

Building technology: Erhart Installationen GmbH

Planner: A3 jp-haustechnik gmbh & co kg

Products: LG 1400, ducts & fittings, VAV-USD-Boxes, spiro, fire dampers, silencers

Product groups:



© J. Pichler GmbH / Florian Scherl