

# VENTILATION UNIT OVERVIEW PICHLER SERIES



 **PICHLER**

*Systematic ventilation.*

## Highly efficient ventilation systems

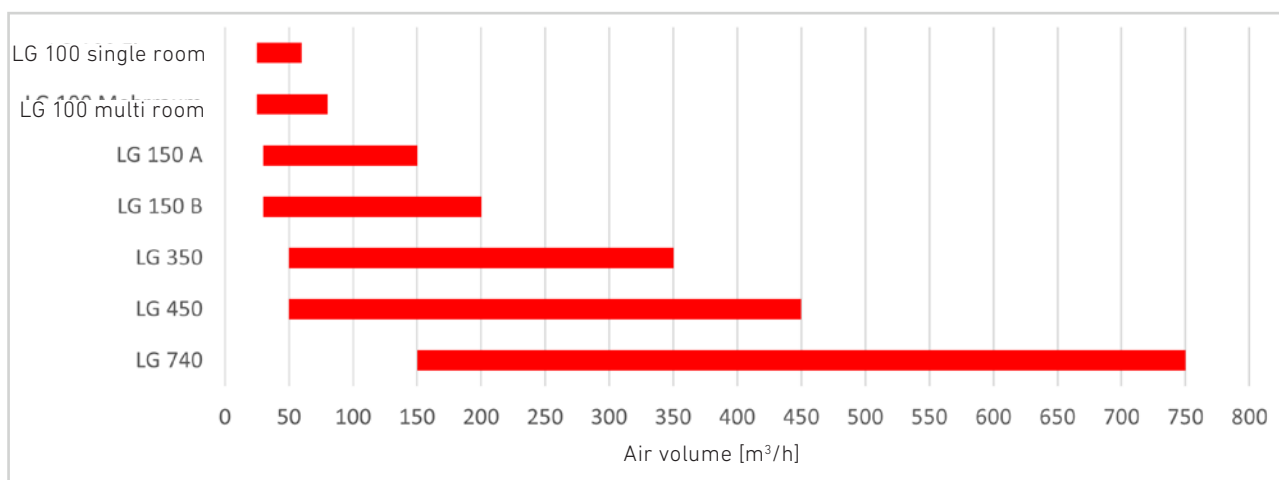
We are immersed in it every day, invisible yet so vital to our well-being – the air without which we cannot live. We spend about two thirds of our time indoors. We may therefore expect healthy, fresh air at home and at work as naturally as we do clean water. Comfort depends largely on the quality of the air. This is exactly where our ventilation systems are needed, since the right combination of temperature, humidity, freshness and cleanliness make you feel truly comfortable.

Our business focuses largely on multi-storey buildings. We were the first supplier of large units certified for regulated aeration and ventilation by the Passive House Institute in Darmstadt. Our range includes central systems supplying several apartments or offices from a central ventilation unit and decentralised systems with a compact unit for each location.

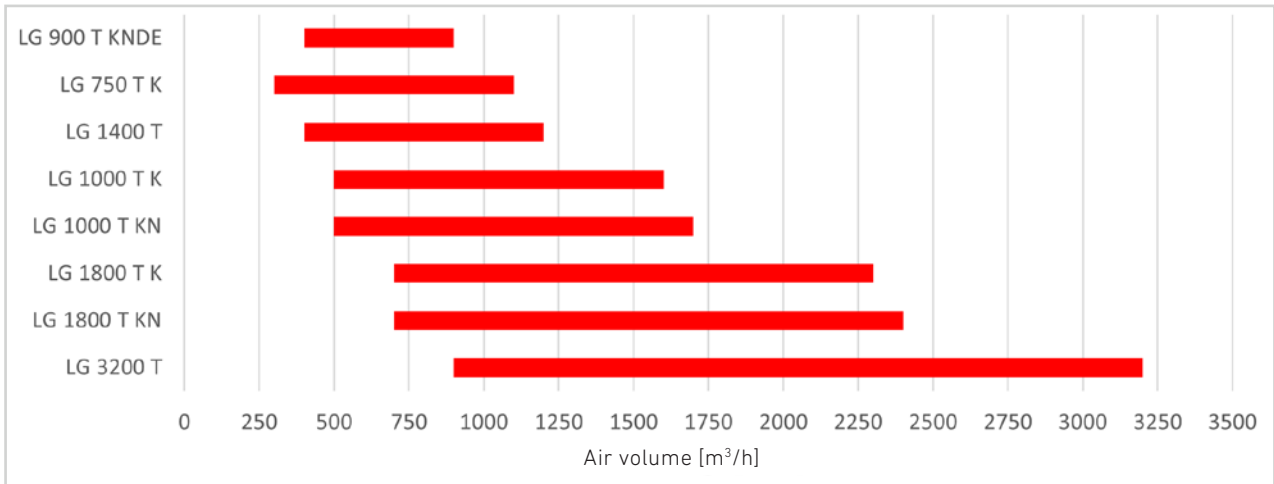
Furthermore, our PICHLER school ventilation systems ensure an excellent indoor climate that promotes the health and performance of both students and teachers. Depending on your initial situation, whether your project concerns a new-build or a renovation, we offer the ideal ventilation technology solution for every application and any size of building: from small-sized nursery schools to university campus, including multi-storey school buildings.

<b>PICHLER STANDARD UNIT SERIES</b> (for new-builds and renovations)		
<b>COMPACT VENTILATION UNITS</b> LG 100 TO LG 3200	<b>MODULAR VENTILATION UNITS</b> LG 750 TO LG 6000	<b>DECENTRALIZED SCHOOL VENTILATION UNITS</b> LG 740 TO LG 1000 SKDE
INDOOR INSTALLATION	INDOOR INSTALLATION	INDOOR INSTALLATION
WEATHERPROOF	WEATHERPROOF	
INTEGRATED IN THE ROOF	INTEGRATED IN THE ROOF	

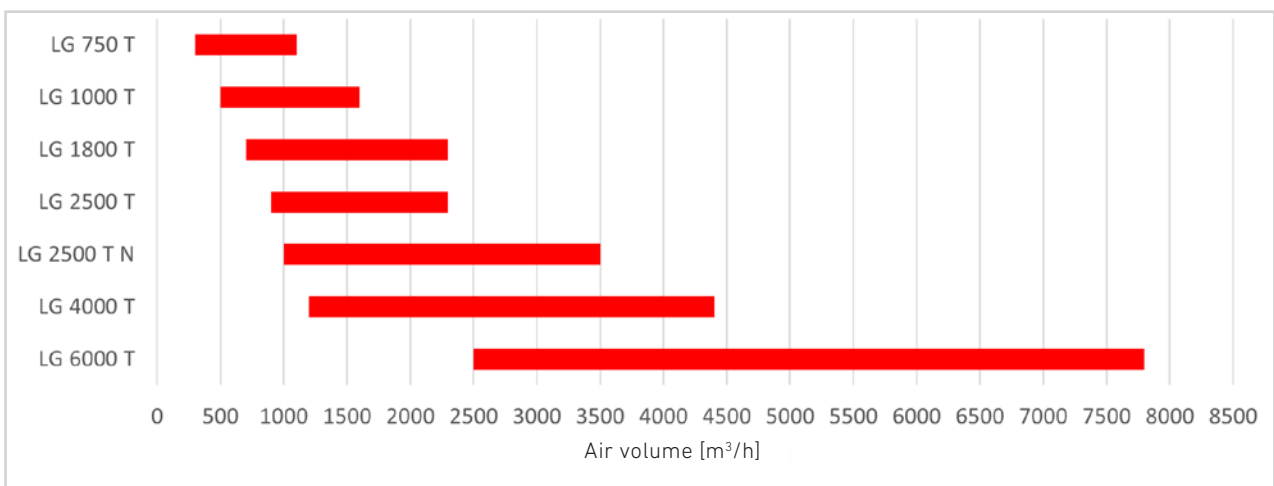
## ErP application area compact ventilation units (up to 750 m<sup>3</sup>/h)



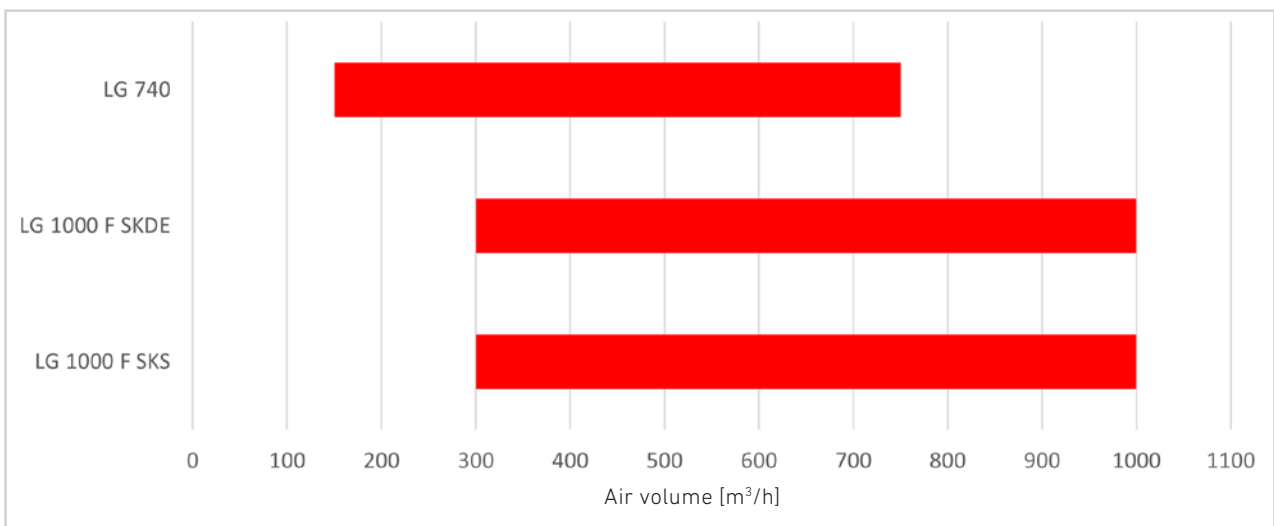
### ErP application area compact ventilation units (up to 3200 m<sup>3</sup>/h)



### ErP application area modular ventilation units (up to 7800 m<sup>3</sup>/h)



### ErP application area decentralized school ventilation units (up to 1000 m<sup>3</sup>/h)



# Ventilation Unit Overview

Type	Design		Area of application				Heat exchanger		Ventilation of schools		Installation type				Place of installation		
	Compact	Modular design	Hygiene certified* (HY)	EPREL*	ErP*	PHI	Standard (T)	Enthalpy (F)	Decentralized school ventilation	Centralized school ventilation	Floor-mounted	Ceiling	Wall (surface mounting)	Wall (flush mounting)	Internal	Weatherproof	Integrated in the roof
LG 100	✓	-		✓	✓		-	✓	-	-	-	✓	✓	✓	✓	-	-
LG 150 A	✓	-		✓	✓	✓	✓	✓	-	-	-	✓	✓	-	✓	-	-
LG 150 B	✓	-		✓	✓		✓	✓	-	-	-	✓	✓	-	✓	-	-
LG 350	✓	-		✓	✓	✓	✓	✓	-	-	✓	-	✓	-	✓	-	-
LG 450	✓	-		✓	✓	✓	✓	✓	-	-	✓	-	✓	-	✓	-	-
LG 740	✓	-	✓	✓	✓		✓	✓	✓	-	✓	-	-	-	✓	-	-
LG 750 K	✓	✓	✓		✓	✓	✓	✓	-	-	✓	-	-	-	-	✓	✓
LG 750	-	✓	✓		✓	✓	✓	✓	-	-	✓	-	-	-	✓	✓	✓
LG 900 KNDE	✓	-	✓		✓		✓	✓	-	-		✓	-	-	✓	-	-
LG 1000 K	✓	✓	✓		✓	✓	✓	✓	-	-	✓	-	-	-	-	✓	✓
LG 1000 KN	✓	-	✓		✓		✓	✓	-	-	✓	-	-	-	-	✓	✓
LG 1000	-	✓	✓		✓	✓	✓	✓	-	-	✓	-	-	-	✓	-	-
LG 1000 SKDE	✓	-	✓		✓		-	✓	✓	-		✓	-	-	✓	-	-
LG 1000 SKS	✓	-	✓		✓		-	✓	✓	-	✓	-	-	-	✓	-	-
LG 1400	✓	-	✓		✓	✓	✓	✓	-	✓	✓	-	-	-	✓	-	-
LG 1800 K	✓	✓	✓		✓		✓	✓	-	-	✓	-	-	-	-	✓	✓
LG 1800 KN	✓	-	✓		✓		✓	✓	-	-	✓	-	-	-	-	✓	✓
LG 1800	-	✓	✓		✓		✓	✓	-	-	✓	-	-	-	✓	✓	✓
LG 2500 N	-	✓	✓		✓		✓	✓	-	-	✓	-	-	-	-	✓	✓
LG 2500	-	✓	✓		✓	✓	✓	✓	-	-	✓	-	-	-	✓	✓	✓
LG 3200	✓	-	✓		✓	✓	✓	✓	-	✓	✓	-	-	-	✓	-	-
LG 4000	-	✓	✓		✓	✓	✓	✓	-	✓	✓	-	-	-	✓	✓	✓
LG 6000	-	✓	✓		✓	✓	✓	-	-	✓	✓	-	-	-	✓	✓	✓

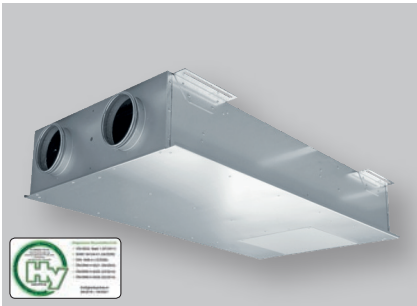
\*EPREL: EPREL according to Regulation (EU) No. 1369/2017

\*ErP: ErP 2018 as to Ecodesign Directive in accordance with EU Regulation 1253/2014

\*PHI: Certified passive house component

Max. ERP limit	Core of enclosure	Without condensation discharge	Components						Operation				Control type
			E-VHR	W-VHR	E-NHR	W-NHR	W-cooling coil	Silencer	APP	MINI	TOUCH	OJ	
80 m³/h	EPP	✓	●	-	-	-	-	○	✓	✓	-	-	-
150 m³/h	EPP	-	●	○	○	○	-	○	✓	✓	✓	-	-
200 m³/h	EPP	-	●	○	○	○	-	○	✓	✓	✓	-	-
350 m³/h	EPP	-	●	○	○	○	○	○	✓	✓	✓	-	●
450 m³/h	EPP	-	●	○	○	○	○	○	✓	✓	✓	-	●
750 m³/h	Galv. sheet steel	-	●	○	○	○	○	○	✓	✓	✓	-	●
1000 m³/h	Galv. sheet steel	-	●	●	●	●	●	●	-	-	-	✓	●
1000 m³/h	Galv. sheet steel	-	●	●	●	●	●	●	-	-	-	✓	●
900 m³/h	Galv. sheet steel	-	●	●	●	●	●	●	-	-	-	✓	●
1500 m³/h	Galv. sheet steel	-	●	●	●	●	●	●	-	-	-	✓	●
1600 m³/h	Galv. sheet steel	-	●	●	●	●	●	○	-	-	-	✓	●
1500 m³/h	Galv. sheet steel	-	●	●	●	●	●	●	-	-	-	✓	●
1000 m³/h	Galv. sheet steel	✓	✓	-	○	○	○	●	✓	-	✓	-	●
1000 m³/h	Galv. sheet steel	✓	✓	-	✓	-	-	✓	✓	-	✓	-	-
1200 m³/h	Galv. sheet steel	-	○	○	○	○	○	○	-	-	-	✓	●
2200 m³/h	Galv. sheet steel	-	●	●	●	●	●	●	-	-	-	✓	●
2200 m³/h	Galv. sheet steel	-	●	●	●	●	●	○	-	-	-	✓	●
2200 m³/h	Galv. sheet steel	-	●	●	●	●	●	●	-	-	-	✓	●
3600 m³/h	Galv. sheet steel	-	●	●	●	●	●	○	-	-	-	✓	●
2300 m³/h	Galv. sheet steel	-	●	●	●	●	●	●	-	-	-	✓	●
3200 m³/h	Galv. sheet steel	-	○	○	○	○	○	○	-	-	-	✓	●
4500 m³/h	Galv. sheet steel	-	●	●	●	●	●	●	-	-	-	✓	●
7100 m³/h	Galv. sheet steel	-	●	●	●	●	●	●	-	-	-	✓	●

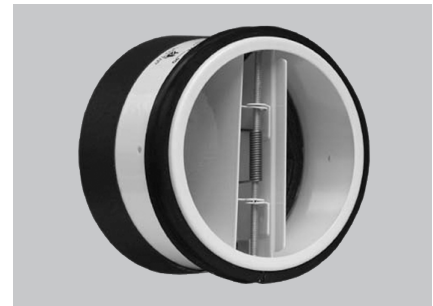
✓ Standard internal   
 ○ Optional external   
 ● Optional internal



VAV USD box



Living space controller



Fire protection closure

## Pichler components and accessories

Pichler is your partner for highly efficient and complete ventilation systems. We offer you all ventilation units, components and all accessories

for your ventilation project, from air distribution to air regulation, including air flow control, and from the air duct system to the smallest screw, including fire protection flaps.

Refer to the technical documentation for details on our range of components.

PICHLER COMPONENTS		
COMFORT VENTILATION	AIR FLOW CONTROL	AIR DISTRIBUTION
AIR QUALITY SENSORS (ROOM TEMPERATURE, CO <sub>2</sub> & HUMIDITY FOR CUSTOMIZED VENTILATION)	SILENCERS PVSR-USD, USD, PFSD	AIR OUTLETS (VALVES, DESIGN VALVES)
TOUCH-SCREEN (OPTIONAL CONTROL UNIT)	VAV-USD BOX FOR SUPPLY AIR AND EXTRACT AIR	
PRE-HEATER AND POST-HEATER BATTERY COOLING COIL	FLOW REGULATOR	
BUILDING AUTOMATION - NETWORKING	DISTRIBUTION SYSTEMS (KOMFLEX ROUND OR OVAL, SYSTEM SAFE)	
	SUCTION AND AIR EJECTION ELEMENTS	
	COMPONENTS FOR THE STRUCTURAL FIRE PROTECTION	



# Overview of unit designations LG 750 to LG 6000

UNIT DESIGNATION: LG1000\_HY\_T\_K\_DINT\_L\_V\_VENE

ITEM NUMBER: 0810 HY T K D L V VENE

<b>Built-in parts</b>		
*	Without designation: no built-in parts	
VE	Electric pre-heater battery	
VW	Water pre-heater battery	
NE	Electric post-heater battery	
NW	Water post-heater battery	
KW	Water cooling battery	
KDX	Refrigerant cooling battery	
KO	Capacitor refrigerant	
KOW	Water combi heater battery	
KOX	Refrigerant combi heater battery	
MK	Mixing chamber	
S1	Acoustic damper in outdoor and exhaust air	
S2	Acoustic damper in supply and extract air	
S3	Acoustic damper in outdoor, exhaust, supply and extract air	
S4	Acoustic damper in supply and exhaust air	
B	Humidifier	
<b>Heat exchanger arrangement</b>		
V	vertical	
H	horizontal	
<b>Inspection side seen from the supply air direction</b>		
L	left	
**	right	
<b>Place of installation</b>		
IN	I	Internal
WF	W	Weatherproof
DINT	D	Integrated in the roof
DE	DE	Ceiling unit
SKDE	SD	Classroom ceiling unit
SKS	SS	Classroom floor-mounted unit
<b>Design</b>		
*	Without designation modular design	
K	Compact	
KN	Compact, side by side	
N	Side by side	
<b>Heat exchanger type</b>		
T	Temperature change > 85%	
F	Enthalpy exchanger with humidity recovery	
<b>Hygiene version</b>		
*	Without designation: Standard configuration	
HY	Hygiene version in accordance with VDI 6022	
<b>Unit type</b>		
LG 750	0807	Ventilation unit LG 750
LG900	0809	Ventilation unit LG 900
LG1000	0810	Ventilation unit LG 1000
LG1800	0818	Ventilation unit LG 1800
LG2500	0825	Ventilation unit LG 2500
LG4000	0840	Ventilation unit LG 4000
LG6000	0860	Ventilation unit LG 6000





**ErP 2018**

Fulfills the requirements of the Ecodesign Directive, in accordance with EU Regulation 1253/2014.



Your partner/installer:



Responsible for the content: J. Pichler Gesellschaft m.b.H.  
J. Pichler Gesellschaft m.b.H. archives | Text: J. Pichler Gesellschaft m.b.H.  
All rights reserved | All photos are generic photos | Subject to change without notice | Version: 04/2024 db



*Systematic ventilation.*

**J. PICHLER**  
Gesellschaft m.b.H.  
  
office@pichlerluft.at  
www.pichlerluft.at

**AUSTRIA**  
**9021 KLAGENFURT**  
**AM WÖRTHERSEE**  
Karlweg 5  
T +43 (0)463 32769  
F +43 (0)463 37548

**AUSTRIA**  
**1100 VIENNA**  
Doerenkampgasse 5  
T +43 (0)1 6880988  
F +43 (0)1 6880988-13

Sales offices  
in Germany, Slovenia and  
Serbia.